

# THE DERBYSHIRE HOTEL

DERBY



PRINCIPAL HAYLEY  
HOTELS AND CONFERENCE VENUES



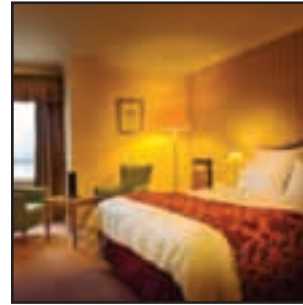
CONFERENCES | MEETINGS | TRAINING | EVENTS



PH

PRINCIPAL HAYLEY

HOTELS AND CONFERENCE VENUE



## DISCOVER THE DERBYSHIRE HOTEL

An excellent, modern hotel with a warm welcome, comfortable surroundings and a dedicated approach to customer service, The Derbyshire Hotel is highly deserving of its reputation as one of the area's most outstanding hotels. Located just off J28 of the M1 motorway, The Derbyshire is an ideal venue for business meetings and special events. Bright, contemporary design and exceptional facilities create a place to stay that is as friendly and informal as it is comfortable and convenient.

Offering a range of 14 meeting rooms and catering for up to 250 delegates, The Derbyshire Hotel's dedicated conference and event organisers are on hand to ensure your event runs smoothly. The hotel offers extensive car parking and all residents have access to the hotel's leisure facilities including indoor pool, gym and treatment rooms.

The Derbyshire Hotel is part of Principal Hayley Hotels and Conference Venues, a collection of key city centre hotels and idyllic conference venues located throughout the UK and Europe. We are committed to investing in our properties and have spent over £100 million to improve and restore our beautiful hotels and venues. Aspiring to be the best upscale conference, training and events led group across Europe, we promise to offer you exceptional levels of service and attention to detail and aim to leave a lasting impression that makes you want to return time and time again.

### AT A GLANCE...

<b>Bedrooms</b>	<b>157</b>
<b>Meeting &amp; Training Rooms</b>	<b>14</b>
<b>Maximum capacity</b>	
Theatre	250
Classroom	120
Boardroom	25
'U' Shape	25
Cabaret	130
Banquet	220
Dinner Dance	160
<b>Technology</b>	WiFi available
<b>Check-in</b>	From 2.00pm
<b>Check-out</b>	Before 12 noon
<b>Restaurant/Bar</b>	Restaurant and Bar
<b>Local attractions</b>	Alton Towers, Peak District, Chatsworth Caves of Nottingham, Denby Pottery, Galleries of Justice, Gulliver's Kingdom, Matlock Bath, Sherwood Forest Visitor's Centre, East Midlands Designer Outlet, National Tramway Museum, Royal Crown Derby, Rufford Abbey, Tales of Robin Hood, Calke Abbey, Crich Stand

## SPECIAL EVENTS

### Banqueting, Private Parties, Weddings...

Whether you are planning a birthday celebration, a golden anniversary, a wedding or simply a party for colleagues and friends, when celebrated, they should be done so with your mark of style on them. Our highly skilled events co-ordinators and team will provide you with the personal and professional service required to make your event a success.

No celebration is complete without food and drink. Whether it's champagne and canapés or a full celebration dinner, all our menus are designed to be absolutely adaptable. Dishes can be designed according to your needs and preferences, whether it's dietary requirements or a fully themed menu. We are also happy to recommend specific champagnes and wines for your chosen menu, ranging from excellent quality house wines, chosen by our Sommelier, through to real world beaters. We also offer a whole range of bottle sizes - wow your guests with Magnums of Champagne or add some cocktails into the mix; a talking point at any event.



# THE IDEAL SPACES

We have some of the most elegant and grand rooms in Derby - perfect for your special event.

## The William Duesbury

The largest meeting room, the William Duesbury Suite (292 sq m) seats up to 250 people and offers state-of-the-art facilities for special events, conferences, training or exhibitions.



## The Pavillion

Our second largest room can accommodate up to 100 guests making it a comfortable and stylish space for your next event.

## The Old Aves

Our third largest room can accommodate up to 75 guests and is a bright and spacious space.

## The Red Aves

The Red Aves can seat up to 65 guests and is ideal for your medium sized events.

## The Gold Aves

Is an impressive space and can accommodate up to 60 guests with modern state-of-the art technology.

With a further 9 rooms that accommodate between 10 and 60 delegates you can be assured that The Derbyshire Hotel will have the perfect space for your next event.





*PH*

PRINCIPAL HAYLEY  
HOTELS AND CONFERENCE VENUES



## CONFERENCES, MEETINGS AND TRAINING

### Conferences

You need your conference to stand out from the crowd, to impress your clients and enthuse your staff. You need seamless presentation, spectacular entertainment, delectable food, delicious wines and champagnes and service that is second to none.

Your dedicated Derbyshire Hotel conference executive will work with you to provide all the latest technology and work hard to meet your needs. Working alongside our expert partner companies and highly-trained chefs we know how to help you achieve results from your event, to design the day to reflect your company's approach and brand values, to meet your brief and maximise your available budget.

### Meetings

With 14 fantastic spaces, we can certainly cater to the needs of your next event. All of our meeting rooms are naturally-lit with air conditioning and are furnished to ensure that your delegates are as comfortable as possible. Technically equipped to the highest specification, we aim to help your meeting run as smoothly as possible.

### Training

Ideally located in the heart of Derbyshire, The Derbyshire Hotel makes a superb choice for training events. Each room is unique and well located so you are not disturbed. The facilities will provide you with everything you need, our service will add the wow factor and the location adds the convenience.

Work hard throughout the day and then meet your delegates in the contemporary bar for a well deserved drink before exploring the vibrant and exciting Derbyshire area.

### Equipment

In addition to technical facilities that come as standard we work in partnership with technical experts in audio-visual, team building, entertainment and theming, utilising their expertise to help you to achieve the very best for your event.



## OUR CONFERENCE COMMITMENT

We guarantee the very best in service and standards. That's why we have created our conference commitment, which provides you with exemplary packages. If however you have more specific needs, we can, of course, tailor make your event to suit your requirements.

### Your Day Delegate Package includes:

- Room hire
- Equipment - LCD projector, television, video, whiteboard and flipchart (additional technical equipment is available on request)
- Fully stocked stationery kit in the main meeting room
- Fresh seasonal fruit in the main meeting room
- Access to a business centre or area offering comprehensive business services
- Unlimited coffee, tea and soft drinks served with homemade cakes or fresh pastries
- Tailor-made lunch options including hot and cold buffets or sit down delegate luncheons
- A dedicated conference executive who will be an extension of your team and will ensure the smooth running of your event

### Your 24-hour Delegate Package includes:

All the above is included with the addition of:

- Overnight accommodation
- Full English breakfast
- Three-course table d'hôte dinner
- Complimentary VIP organiser's package including upgraded bedrooms (subject to availability)

A man in a dark suit, white shirt, and striped tie stands in a conference room, smiling and holding a tablet. He is positioned to the right of a large projector screen. The screen displays the logo for Principal Hayley Hotels and Conference Venues, which consists of a green square with the letters 'PH' in white, followed by the text 'PRINCIPAL HAYLEY' and 'HOTELS AND CONFERENCE VENUES' in white on a dark background. The room features several long wooden tables arranged in a U-shape, with dark grey chairs having white legs. On the tables, there are water bottles, glasses, and small bowls of snacks. A laptop is open on one of the tables in the background. The room has a patterned carpet and recessed ceiling lights.

PH

PRINCIPAL HAYLEY  
HOTELS AND CONFERENCE VENUES



## RELAX AND UNWIND

### Home Away From Home

Every bedroom has been designed to suit the needs of the business executive including a high speed internet connection and working area. We have sourced the most comfortable of beds, found the best bed linen and provided an array of quality amenities and refreshments to ensure you enjoy your stay.

### Dining for All Occasions

From corporate events to dinner dances we are totally committed to the success of your event. The standard of cuisine is also second to none. Our menus are compiled using the finest fresh produce, passionately prepared and cooked by our talented chefs and their experienced team who are always on hand to discuss your requirements in detail. This is accompanied by an extensive selection of the finest traditional and new world wines, selected exclusively for The Derbyshire Hotel. All professionally served with total flexibility using the finest quality serviceware with immaculately dressed tables.

## AROUND DERBY

Compact it may be, but Derby manages to pack in a huge range of attractions, events and activities - not least of all, the shopping. The Georgian facades of Sadlergate lend an air of sophistication to the streets' cafés, pubs and restaurants, while its fascinating mix of independent shops are a shoppers paradise. For one of the biggest and best shopping complexes you can visit Westfield Shopping Centre. Markets are at the core of Derby city life and there's an almost endless array of goods and produce available from the permanent stalls in Westfield Derby, as well as in the imposing St.Pancras Station-styled Guildhall Market and the nearby Fish Market.

The Derbyshire Hotel is also located on the doorstep of the stunning and diverse scenery of the Peak District - a paradise for walking and cycling holidays, mountain biking and adventure sports such as caving, rock climbing, hang gliding and paragliding. There is also plenty to do if you've got a more relaxed approach to nature and the great outdoors, whether you're following in the footsteps of the stars on the film tourism trail or sampling the area's renowned food, drink and local produce, Derbyshire really is a great destination.

# PRINCIPAL HAYLEY HOTELS AND CONFERENCE VENUES

## SCOTLAND

THE GEORGE HOTEL, EDINBURGH (H)

## NORTH WEST ENGLAND

THE PALACE HOTEL, MANCHESTER (H)

CRANAGE HALL, MANCHESTER (SOUTH) (V)

## NORTH EAST ENGLAND

THE ROYAL YORK HOTEL & EVENTS CENTRE, YORK (H)

THE MET, LEEDS (H)

KENWOOD HALL, SHEFFIELD (V)

## CENTRAL ENGLAND

EASTWOOD HALL, NOTTINGHAM (V)

THE DERBYSHIRE HOTEL, DERBY (H)

HAWKSTONE PARK, SHREWSBURY (ASSOCIATE HOTEL)

THE ST. JOHNS HOTEL, SOLIHULL, BIRMINGHAM (H)

ETTINGTON CHASE, STRATFORD-UPON-AVON (V)

SEDGEBROOK HALL, NORTHAMPTON (V)

## SOUTHERN ENGLAND

HORWOOD HOUSE, MILTON KEYNES (V)

ALEXANDRA HOUSE, SWINDON (V)

HOTEL RUSSELL, LONDON (H)

SELSDON PARK, SOUTH CROYDON (V)

WOTTON HOUSE, DORKING (V)

BEAUMONT ESTATE, OLD WINDSOR (V)

## WALES

THE ST. DAVID'S HOTEL & SPA, CARDIFF (H)

## EUROPE

LA MOLA, BARCELONA (V)

CHÂTEAU SAINT JUST, PARIS (V)

VENUES (V) HOTELS (H)

FOR FURTHER INFORMATION PLEASE CALL  
PH CONNECTIONS ON 0870 242 7474.

[www.principal-hayley.com](http://www.principal-hayley.com)



**PRINCIPAL HAYLEY**  
HOTELS AND CONFERENCE VENUES

**The Derbyshire Hotel** Carter Lane East, South Normanton, Derby, DE55 2EH

Telephone 01773 812000 | Fax 01773 580032 | [reservations.derbyshire@principal-hayley.com](mailto:reservations.derbyshire@principal-hayley.com)

GDS Chain Codes: Sabre WV 36221 | Gallileo WV 20542 | Amadeus WV EMABRB | Worldspan WV EMABR